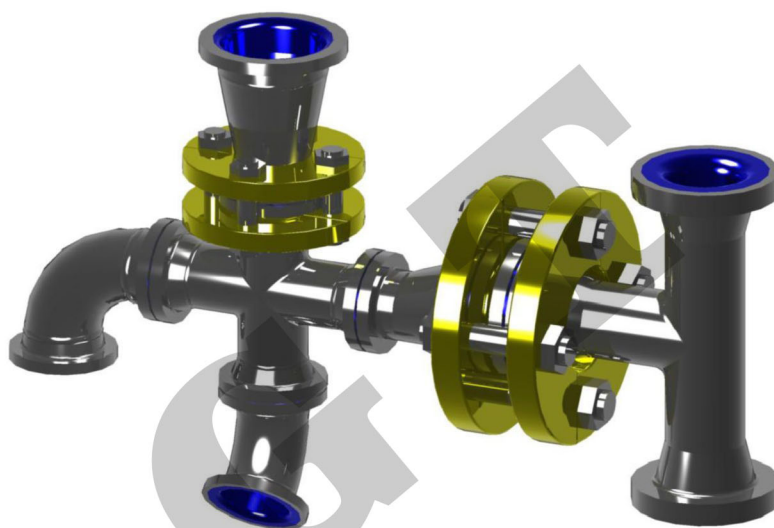
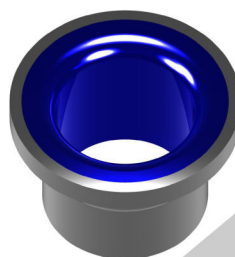
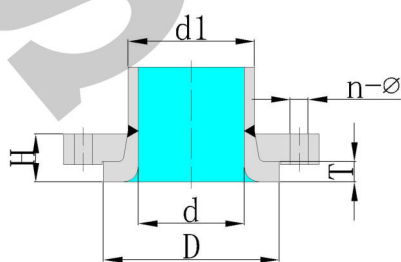




## 搪玻璃管件 Glass lined pipe fittings

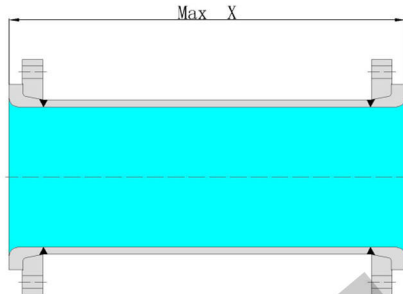


## 管口 Pipe orifice



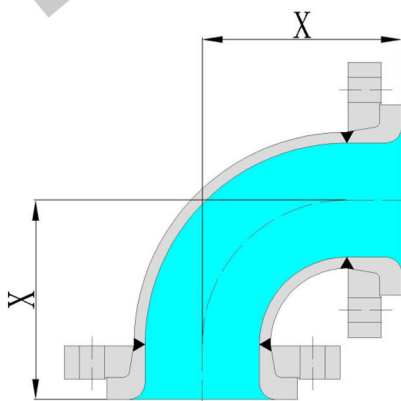
SIZE	d mm	d1 mm	D mm2	T mm	H mm	n-φ mm
25	φ 26.5	φ 33.7	φ 61	12	26	4-φ 14
32	φ 34.4	φ 42.4	φ 72	12	28	4-φ 18
40	φ 41.1	φ 48.3	φ 80	12	28	4-φ 18
50	φ 52.3	φ 60.3	φ 102	14	32	4-φ 18
65	φ 67.1	φ 76.1	φ 120	14	32	4-φ 18
80	φ 77.7	φ 88.9	φ 130	16	38	8-φ 18
100	φ 101.7	φ 114.3	φ 158	16	38	8-φ 18
125	φ 126.7	φ 139.7	φ 188	16	40	8-φ 18
150	φ 154.1	φ 168.3	φ 212	16	46	8-φ 22
200	φ 203.1	φ 219.1	φ 268	20	48	8-φ 22
250	φ 253	φ 273	φ 320	22	54	12-φ 22
300	φ 304.8	φ 323.9	φ 370	24	58	12-φ 22

## 直管 Glass lined pipe



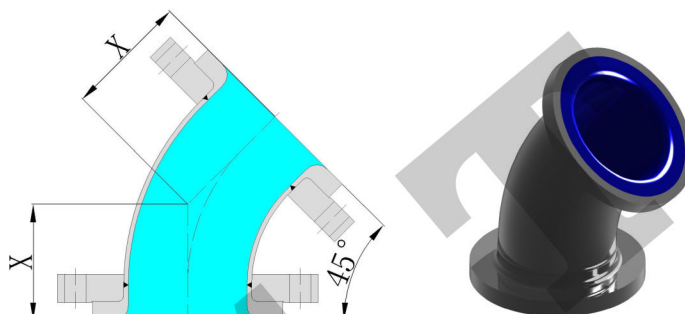
SIZE	X mm	SIZE	X mm	SIZE	X mm
25	2000	65	3000	150	3000
32	2000	80	3000	200	3000
40	2500	100	3000	250	3000
50	3000	125	3000	300	3000

## 90°弯头 Glass lined elbow 90°



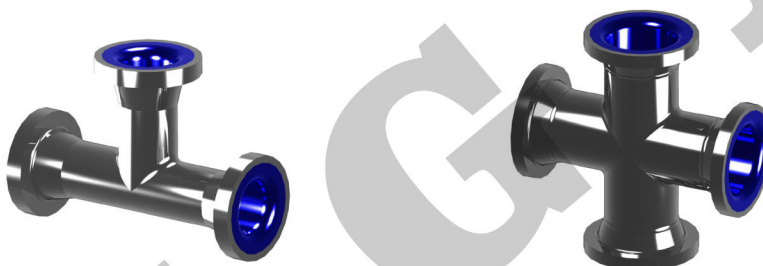
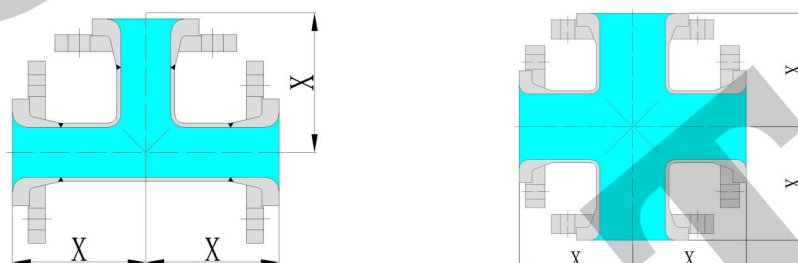
SIZE	X mm	SIZE	X mm	SIZE	X mm
25	90	65	120	150	195
32	100	80	135	200	260
40	105	100	155	250	315
50	115	125	175	300	360

## 45°弯头 Glass lined elbow 45°



SIZE	X mm	SIZE	X mm	SIZE	X mm
25	60	65	85	150	150
32	65	80	95	200	180
40	70	100	105	250	220
50	80	125	125	300	250

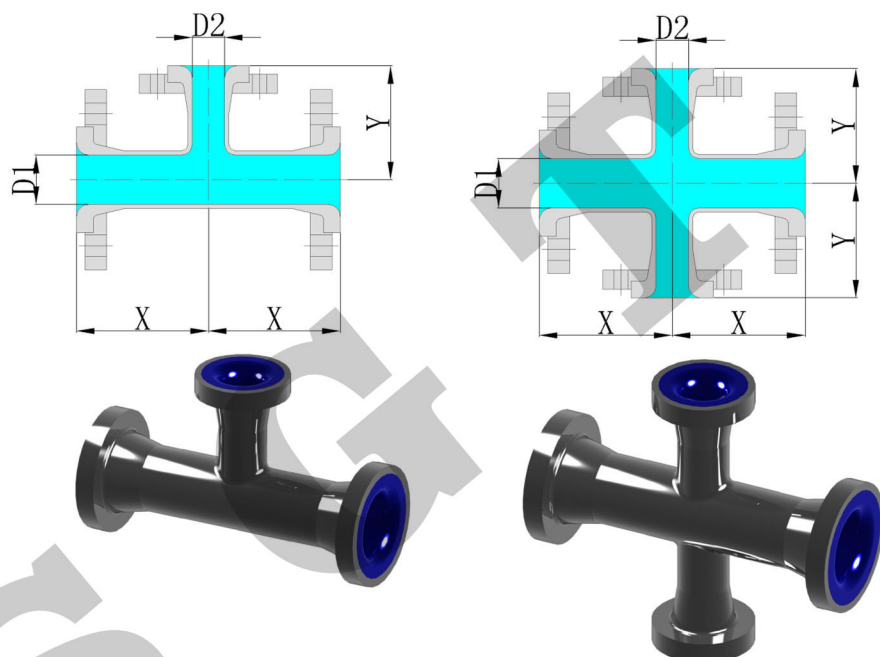
## 正三通/四通 Glass lined equal tee and cross



SIZE	X mm	SIZE	X mm	SIZE	X mm
25	90	65	120	150	195
32	100	80	135	200	260
40	105	100	155	250	315
50	115	125	175	300	360

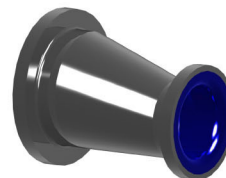
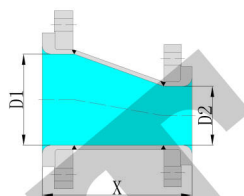
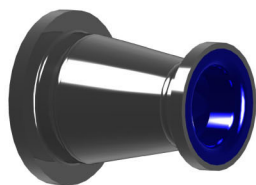
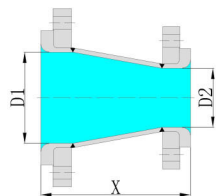


## 异径三通/四通 Reducing tee and cross



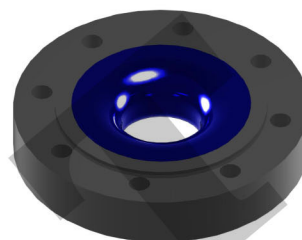
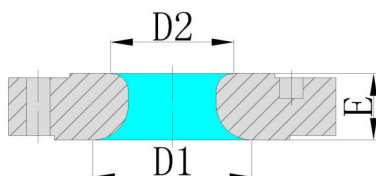
D1 mm	D2 mm	25	32	40	50	65	80	100	125	150	200	250
<b>50</b>	<b>X mm</b>	<b>115</b>	<b>115</b>	<b>115</b>								
	<b>Y mm</b>	<b>100</b>	<b>105</b>	<b>110</b>								
<b>65</b>		<b>120</b>	<b>120</b>	<b>120</b>	<b>120</b>							
		<b>105</b>	<b>110</b>	<b>115</b>	<b>120</b>							
<b>80</b>		<b>135</b>	<b>135</b>	<b>135</b>	<b>135</b>	<b>135</b>						
		<b>115</b>	<b>120</b>	<b>125</b>	<b>130</b>	<b>135</b>						
<b>100</b>		<b>155</b>	<b>155</b>	<b>155</b>	<b>155</b>	<b>155</b>	<b>155</b>					
		<b>125</b>	<b>130</b>	<b>135</b>	<b>140</b>	<b>145</b>	<b>150</b>					
<b>125</b>		<b>175</b>	<b>175</b>	<b>175</b>	<b>175</b>	<b>175</b>	<b>175</b>	<b>175</b>				
		<b>140</b>	<b>145</b>	<b>150</b>	<b>155</b>	<b>160</b>	<b>165</b>	<b>170</b>				
<b>150</b>		<b>195</b>	<b>195</b>	<b>195</b>	<b>195</b>	<b>195</b>	<b>195</b>	<b>195</b>	<b>195</b>			
		<b>155</b>	<b>160</b>	<b>165</b>	<b>170</b>	<b>175</b>	<b>180</b>	<b>185</b>	<b>190</b>			
<b>200</b>		<b>260</b>	<b>260</b>	<b>260</b>	<b>260</b>	<b>260</b>	<b>260</b>	<b>260</b>	<b>260</b>	<b>260</b>		
		<b>185</b>	<b>190</b>	<b>195</b>	<b>200</b>	<b>205</b>	<b>210</b>	<b>215</b>	<b>220</b>	<b>225</b>		
<b>250</b>		<b>315</b>	<b>315</b>	<b>315</b>	<b>315</b>	<b>315</b>	<b>315</b>	<b>315</b>	<b>315</b>	<b>315</b>	<b>315</b>	
		<b>230</b>	<b>235</b>	<b>240</b>	<b>245</b>	<b>250</b>	<b>255</b>	<b>260</b>	<b>265</b>	<b>270</b>	<b>275</b>	
<b>300</b>		<b>360</b>	<b>360</b>	<b>360</b>	<b>360</b>	<b>360</b>	<b>360</b>	<b>360</b>	<b>360</b>	<b>360</b>	<b>360</b>	<b>360</b>
		<b>235</b>	<b>240</b>	<b>245</b>	<b>250</b>	<b>255</b>	<b>260</b>	<b>265</b>	<b>270</b>	<b>275</b>	<b>280</b>	<b>300</b>

## 异径管 Reducer



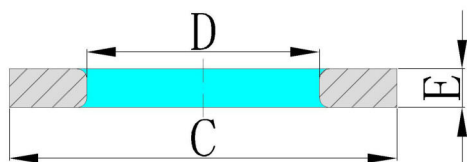
D1 mm	D2 mm	25	32	40	50	65	80	100	125	150	200	250
<b>50</b>	<b>X mm</b>	<b>140</b>	<b>140</b>	<b>140</b>								
<b>65</b>		<b>150</b>	<b>150</b>	<b>150</b>	<b>150</b>							
<b>80</b>		<b>160</b>	<b>160</b>	<b>160</b>	<b>160</b>	<b>160</b>						
<b>100</b>		<b>175</b>	<b>175</b>	<b>175</b>	<b>175</b>	<b>175</b>	<b>175</b>					
<b>125</b>				<b>200</b>	<b>200</b>	<b>200</b>	<b>200</b>	<b>200</b>				
<b>150</b>					<b>225</b>	<b>225</b>	<b>225</b>	<b>225</b>	<b>225</b>			
<b>200</b>					<b>250</b>	<b>250</b>	<b>250</b>	<b>250</b>	<b>250</b>	<b>250</b>		
<b>250</b>						<b>300</b>	<b>300</b>	<b>300</b>	<b>300</b>	<b>300</b>	<b>300</b>	
<b>300</b>							<b>325</b>	<b>325</b>	<b>325</b>	<b>325</b>	<b>325</b>	<b>325</b>

## 异径法兰 Reducing flange



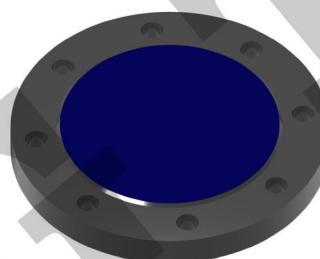
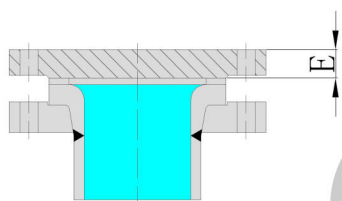
D1 mm	D2 mm	25	32	40	50	65	80	100	125	150	200	250
<b>40</b>	<b>E mm</b>	<b>35</b>	<b>35</b>									
<b>50</b>		<b>35</b>	<b>35</b>	<b>35</b>								
<b>65</b>		<b>35</b>	<b>35</b>	<b>35</b>	<b>35</b>							
<b>80</b>		<b>35</b>	<b>35</b>	<b>35</b>	<b>35</b>	<b>35</b>						
<b>100</b>		<b>45</b>	<b>45</b>	<b>45</b>	<b>45</b>	<b>45</b>	<b>45</b>					
<b>125</b>		<b>45</b>	<b>45</b>	<b>45</b>	<b>45</b>	<b>45</b>	<b>45</b>	<b>45</b>				
<b>150</b>		<b>45</b>	<b>45</b>	<b>45</b>	<b>45</b>	<b>45</b>	<b>45</b>	<b>45</b>	<b>45</b>			
<b>200</b>		<b>45</b>	<b>45</b>	<b>45</b>	<b>45</b>	<b>45</b>	<b>45</b>	<b>45</b>	<b>45</b>	<b>45</b>		
<b>250</b>		<b>45</b>	<b>45</b>	<b>45</b>	<b>45</b>	<b>45</b>	<b>45</b>	<b>45</b>	<b>45</b>	<b>45</b>	<b>45</b>	
<b>300</b>		<b>45</b>	<b>45</b>	<b>45</b>	<b>45</b>	<b>45</b>	<b>45</b>	<b>45</b>	<b>45</b>	<b>45</b>	<b>45</b>	<b>45</b>

## 调节环 Regulating ring



D mm	25	32	40	50	65	80	100	125	150	200	250	300
C mm	68	72	88	102	120	138	158	188	212	268	320	370
E mm	重量kg Weight											
15	1.5	1.6	1.7	1.8	2	2.2	2.1	2.1	2.1	2.4	2.4	2.4
20	2	2.1	2.3	2.4	2.7	3	2.7	2.8	2.9	3.2	3.2	3.2
25	2.5	2.7	2.9	3.1	3.4	3.7	3.4	3.5	3.6	4	4.1	4
30	3.1	3.3	3.5	3.7	4	4.4	4.1	4.2	4.3	4.8	4.9	6.4
40	4.1	4.1	4.1	4.6	5.2	5.9	5.5	5.6	5.7	6.4	6.5	6.4
50						6.1	6.9	7	7.2	8.1	8.1	8

## 盲法兰 Glass lined blind flange



SIZE	X mm	SIZE	X mm	SIZE	X mm
25	90	65	120	150	195
32	100	80	135	200	260
40	105	100	155	250	315
50	115	125	175	300	360

We can provide the following equipment about glass lined  
Glass lined reactors acc. To DIN 28136、ANSI、JIS、HG  
Glass lined Pharma Reactors  
Components for pharmaceutical and high purity applications  
Mixing technology pharmaceutical and chemical industry  
Reactors for Ploymerization  
Storage Tanks and Receivers Columns  
Heat Exchangers  
Sensor technology Accessories

我们可以提供以下有关搪玻璃设备  
按照DIN28136, ANSI, JIS, HG标准生产的搪玻璃设备  
搪玻璃制药反应釜  
制药或高纯度应用的部件  
制药和化学工业的搅拌聚合反应釜  
储罐和回收罐  
热交换器  
配件

**Best Quality –Quick Delivery—Fair Price**

**最佳的质量 — 快捷的服务 — 合理的价格**

Erection and Installation 安装  
Startups 开车  
Periodic inspections 定期检查  
Maintenance 维护  
Spare parts 备件  
Re-glassing 重新搪瓷釉  
Enamelcoating repair 搪玻璃层维修  
Retrofit 翻新  
Seminars and trainings 研讨交流会和培训  
Process optimization 工艺优化  
Failure analysis 故障分析  
Service communication 服务联络  
Quality inspection 质量检查



**警告:**

本样本中展示的产品性质和应用范围都是典型的例子。当您用于特殊场合时，需要对其适用性进行单独的研究和评定。您可以向SGT公司咨询。不适当选择搪玻璃设备产品可能导致财产损失和/或危及人身安全。

本样本中列出的性能数据来自现场的试验，客户的现场报告和/或实验室的试验。

尽管我们已很仔细的编辑了本样本，但我们不承担可能会出现的质量责任。技术特性可能随时更改而不再另行通知。本版本取代了我们以往发表的所有版本，修改也不另行通知。  
© SGT Inc 2015。全球版权所有。

**WARNING:**

Properties/applications shown throughout this brochure are typical. Your specific application should not be undertaken without independent study and evaluation for suitability. For specific application recommendation consult SGT. Failure to select the proper glass-lined equipment products could result in property damage and/or serious personal injury

Performance data published in this brochure has been developed from field testing, customer field reports and/or in-house testing.

While the utmost care has been used in compiling this brochure, we assume no responsibility for errors. Specifications subject to change without notice. This edition cancels all previous issues. Subject to change without notice.

© SGT Inc 2015. All right reserved worldwide.

**上海工塘化工设备有限公司**  
**SGT Glass-Lined Equipment Co., Ltd**

地址: 上海市静安区威海路727弄15号  
Address: No 15, Lane 727, Weihai Rd, Shanghai, PR China  
电话/TEL: 021-62676119 62570605  
传真/FAX: 021-62574380 邮编/Post: 200041  
Http://www.sgt-china.com  
E-mail: sales@sgt-china.com

**无锡制造基地**  
**Wuxi Workshop**

地址: 宜兴市芳桥工业集中区虎皇大道88号  
Address: No 88, Hu Huang Rd, Fang Qiao Industrial Park, Yixing  
邮编/Post: 214265